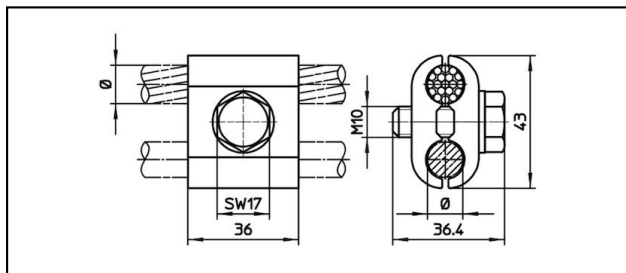
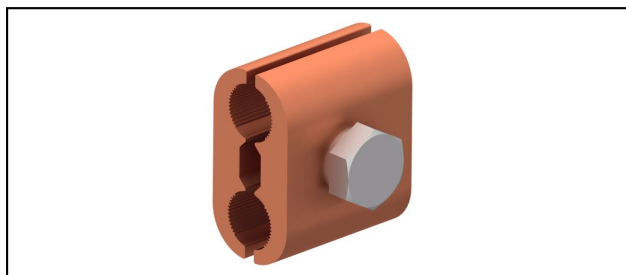


Morsetti per feeder

■ **EK36D** Morsetto universale**Applicazione**


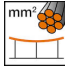
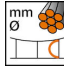

Alimentazione parallela per fune portante

Caratteristiche

Coppia di serraggio 40 Nm

Materiale

CuNiSi

Rif. Articolo									
635.355.000	12.5	95	11.5						0.22

Specifiche tecniche: **Morsetto universale EK36D**

	635.355.000
Coppia di serraggio	40 N·m
Diametro funi portanti	12.5 mm
Sezione funi portanti	95 mm ²
Diametro cavo di alimentazione	11.5 mm
Specifiche commerciali	
Numero di tariffa doganale	85359000
paese di origine	CH
Specificazione logistica	
Chilo / pezzo	0.22 kg

